

SPECIFICATIONS:

Model Number: 8015-114-111

Pump:

Positive displacement 3 chamber diaphragm pump
 Bypass: 100 PSI (7 Bar) max
 Upper housing with 3/8"-18 NPT Female ports
 Maximum inlet pressure 30 PSI
 Run dry: Yes

Material of construction:

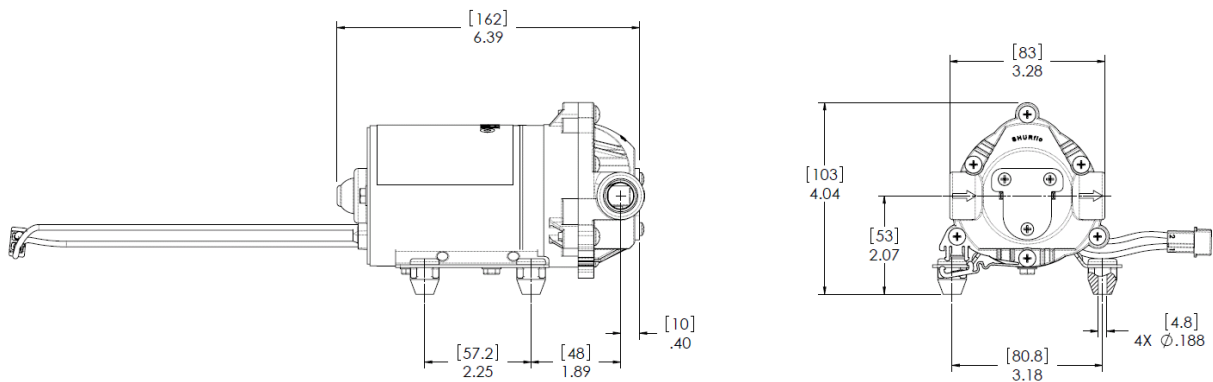
Plastics: Nylon
 Valves: EPDM
 Diaphragm: Santoprene

Electrical:

24 VDC Permanent Magnet Brush Motor CE
 2.0 degree cam
 Duty cycle: continuous

Typical application:

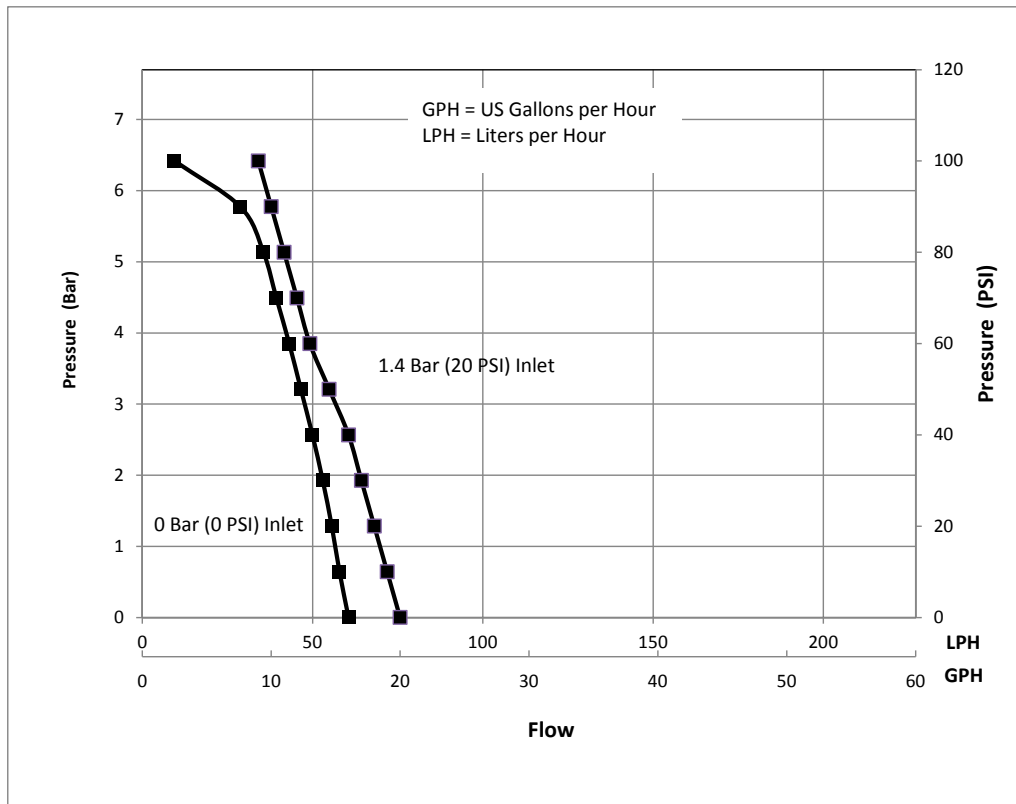
R.O. boost pump

DIMENSIONS:


Nominal dimensions shown in inches (mm).

TYPICAL PERFORMANCE:

Pressure (Bar)	Flow (LPH) @ 0Bar	Flow (LPH) @ 1.4Bar	Pressure (PSI)	Flow (GPH) @ 0 PSI	Flow (GPH) @ 20 PSI	Current (A)	Voltage (Volts)
0	61	76	0	16	20	0.23	24
0.7	58	72	10	15	19	0.30	24
1.4	56	68	20	15	18	0.35	24
2.1	53	64	30	14	17	0.42	24
2.8	50	61	40	13	16	0.48	24
3.5	47	55	50	12	15	0.55	24
4.2	43	49	60	11	13	0.62	24
4.9	39	45	70	10	12	0.67	24
5.6	36	42	80	9	11	0.74	24
6.3	29	38	90	8	10	0.79	24
7	9	34	100	3	9	0.86	24



Specifications subject to change without notice

PENTAIR WATER BELGIUM bvba

Industriepark Wolfstee, Toekomstlaan 30, B-2200 Herentals, Belgium

TEL: +32-14-283 500 FAX: +32-14-283 505 email: shurflo@pentair.com