

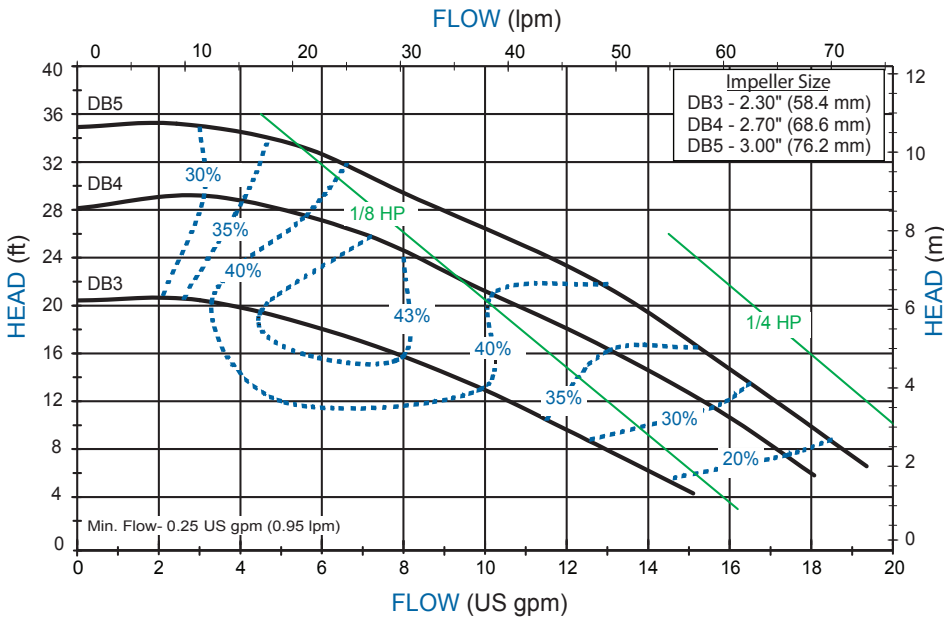


DB SERIES

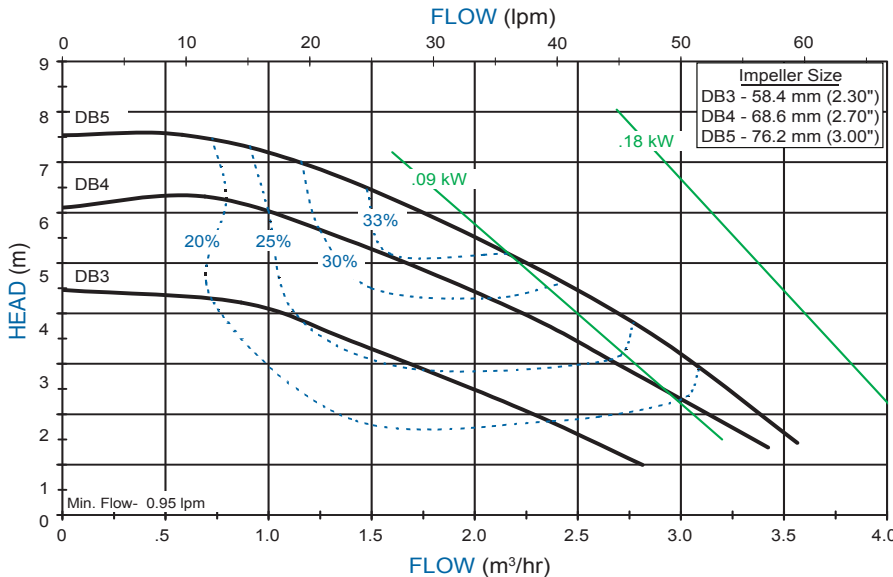
MODELS DB3, DB4, DB5



DB3/4/5 PERFORMANCE 3450 RPM



DB3/4/5 PERFORMANCE 2900 RPM



FEATURES & CAPABILITIES

- + Five-year warranty
- + Extended run dry ability (with carbon bushing)
- + High operating efficiency
- + Polypropylene or PVDF construction
- + Powerful neodymium magnets
- + Close-coupled design
- + Threaded NPT or BSP connections
- + Horizontal or vertical installation
- + Back pullout design
- + Mounts to IEC 56, 63, & 71 B14 motor frames
- + Easy set, measurement free drive
- + CE certified
- + Working pressure to 60 psi (4.1 bar)
- + Specific gravity up to 1.8
- + Viscosity up to 150 cP
- + Polypropylene—180° F (82° C)
- + PVDF—220° F (104° C)

APPLICATIONS

- + Chemical processing
- + Plating
- + Water and wastewater
- + Electronics
- + Pharmaceuticals
- + Wet scrubber
- + Pulp and paper
- + Heat exchanger
- + and many more!



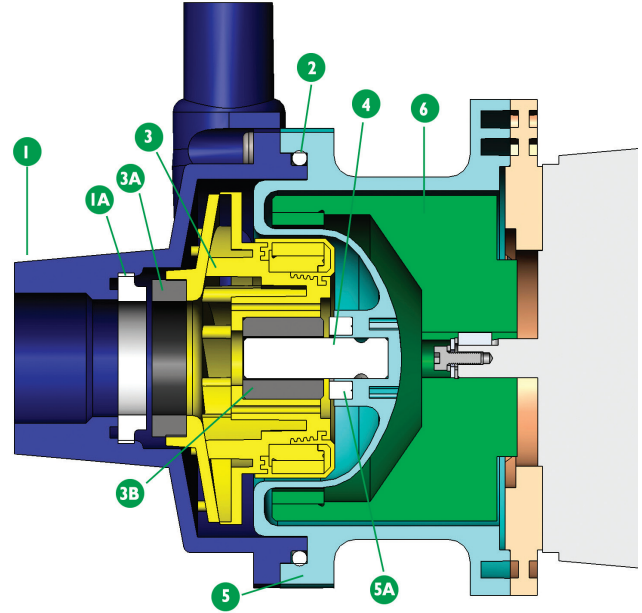
WILHELM KELLER GmbH & Co.KG | Herdweg 1 | 72147 Nehren

www.keller-pumpen.de | info@keller-pumpen.de | +49 (0) 7473 / 9449-0

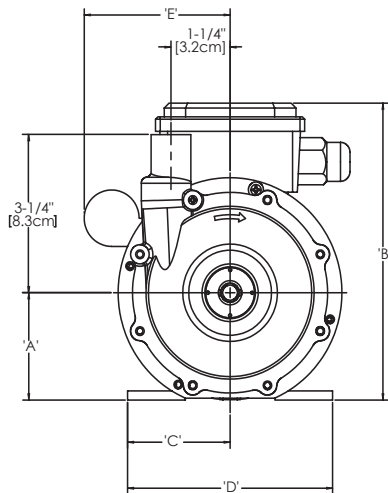
DB SERIES

Specifications

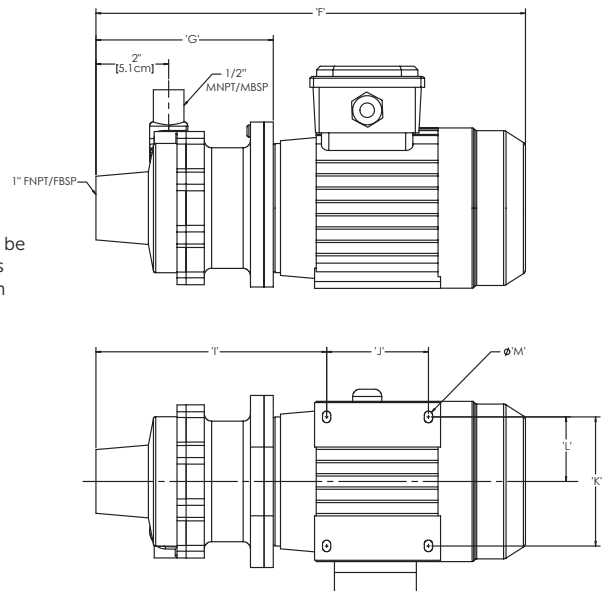
| Description | Polypropylene | PVDF |
|---------------------------------|---|--|
| 1 Impeller housing | Glass-fiber reinforced polypropylene (GF PP) | Carbon-fiber reinforced PVDF (CF PVDF) |
| 1A Impeller housing thrust ring | High purity alumina ceramic | |
| 2 O-ring | FKM or EPDM | |
| 3 Impeller | GF PP and neodymium iron boron magnets encapsulated in unfilled polypropylene | CF PVDF and neodymium iron boron magnets encapsulated in unfilled PVDF |
| 3A Impeller thrust ring | Glass-fiber molybdenum disulfide filled PTFE | |
| 3B Bushing | Carbon, PTFE, high purity alumina ceramic | |
| 4 Shaft | High purity alumina ceramic | |
| 5 Barrier/Motor adapter | GF PP | CF PVDF |
| 5A Barrier thrust ring | Silicon carbide | |
| 6 Outer drive magnets | Nickel-plated neodymium iron boron magnets/ epoxy painted steel | |



Dimensions



¹Dimensions for K, L, and M can be found in the Outline Dimensions booklet in the Resources section of www.finishthompson.com.



| Motor Frame | A | B [†] | C | D | E | F | G | I | J | Weight - lbs. [kg] | |
|--------------|--------------------|--------------------|--------------------|---------------------|--------------------|---------------------|--------------------|---------------------|--------------------|--------------------|-------------|
| | | | | | | | | | | PP | PVDF |
| IEC 56 w/B14 | 2-7/32\" [5.6 cm] | 6-1/8\" [15.5 cm] | 2-5/32\" [5.5 cm] | 4-5/16\" [10.9 cm] | 3-1/16\" [7.8 cm] | 11-3/4\" [29.9 cm] | 4-7/8\" [12.4 cm] | 6-5/16\" [16.1 cm] | 2-25/32\" [7.1 cm] | 3.7 [1.7] | 4.05 [1.84] |
| IEC 63 w/B14 | 2-15/32\" [6.3 cm] | 6-5/16\" [16 cm] | 2-13/32\" [6.1 cm] | 4-13/16\" [12.2 cm] | 3-7/16\" [8.7 cm] | 12-7/8\" [32.7 cm] | 4-7/8\" [12.4 cm] | 6-5/8\" [16.9 cm] | 3-5/32\" [8 cm] | 3.7 [1.7] | 4.05 [1.84] |
| IEC 71 w/B14 | 2-13/16\" [7.1 cm] | 7-7/16\" [18.9 cm] | 2-11/16\" [6.9 cm] | 5-13/32\" [13.7 cm] | 3-13/16\" [9.7 cm] | 14-1/16\" [35.8 cm] | 5-5/32\" [13.1 cm] | 6-15/16\" [17.6 cm] | 3-17/32\" [9 cm] | 3.9 [1.77] | 4.35 [1.97] |

Dimensions and weights are for reference only. Weights listed are for pump only; motor not included.

[†]Varies with motor manufacturer.



WILHELM KELLER GmbH & Co.KG | Herdweg 1 | 72147 Nehren

www.keller-pumpen.de | info@keller-pumpen.de | +49 (0) 7473 / 9449-0